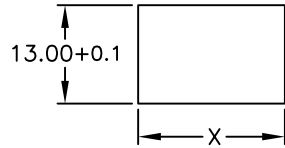
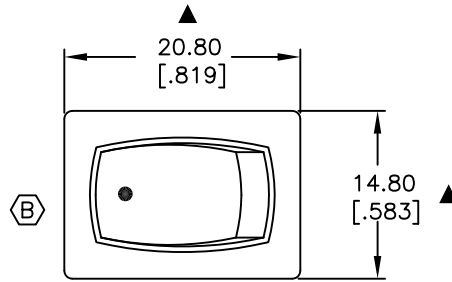


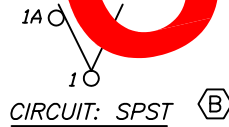
PANEL THICKNESS	X dimension
0.75-1.25 [.030-.049]	19.2-0.1 [.756]
1.25-2.0 [.049-.079]	19.4-0.1 [.764]
2.0-3.0 [.079-.118]	19.8-0.1 [.780]



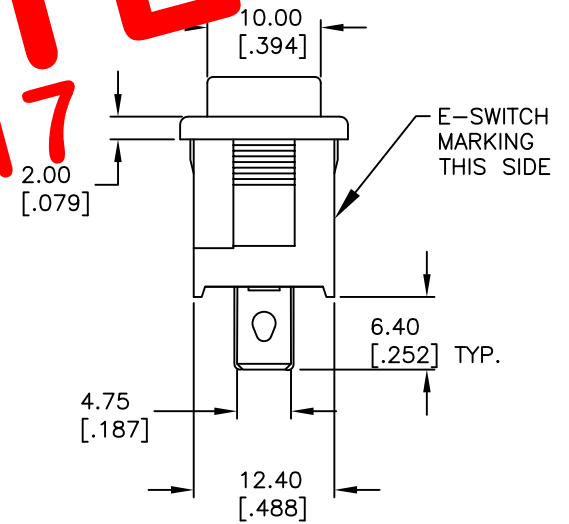
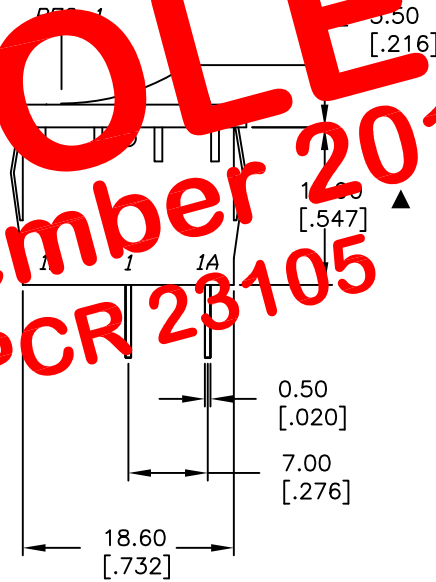
PANEL CUTOUT
NOT TO SCALE



SWITCH FUNCTION	
POS. 1	POS. 2
ON	OFF
1-1c	OFF



OBSOLETE
November 2017
PCR 23105



NOTES:

1. ALL DIMENSIONS IN MM [INCH]
2. GENERAL TOLERANCE: X.X=±0.4
X.XX=±0.25
3. TERMINAL NUMBERS FOR REF ONLY
4. RATING:
15A @125VAC; 8A @250V UL,VDE,CSA APPROVED
6A @250VAC
- ▲ 5. MATERIALS: (TERMINALS) SILVER PLATED COPPER
(CONTACTS) COIN SILVER, SILVER PLATED.
6. CONTACT RESISTANCE: <20 Mega
7. ELECTRICAL LIFE: 10,000 cycles
8. INSULATION RESISTANCE: >1000 Mega
9. DIELECTRIC STRENGTH: >1500V 1 minute
>3000V between Poles
10. OPERATING TEMP. RANGE: -25°C to +85°C
11. ▲ DENOTES CRITICAL PARAMETER.

C	14397	CORRECT TITLE	10/12/04	AR
B	14358	GRAPHIC LOCATION, CIRCUIT	9/28/04	AR
A	13179	RELEASED FOR PRODUCTION	6/4/03	AR
REV.	ECN No.	DESCRIPTION	DATE	CHKD

THE INFORMATION CONTAINED IN THIS DOCUMENT
IS PROPRIETARY TO E-SWITCH AND IS
NOT TO BE COPIED OR TRANSFERRED

E-SWITCH®				
TITLE R1966ABLKBLKAG				
SCALE	DATE	DR	DWG	REV
1.5:1	6/4/03	AR	M300005	C